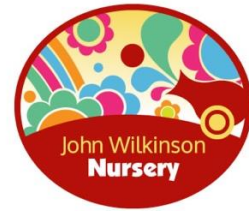




John Wilkinson Primary School and Nursery



Starting school
June 2021

The practicalities.

School doors open at 8.45. The register is taken at 9.00am. We encourage children to be in school at 8.45 so that they can take part in early morning activities.

School finishes for the Foundation stage at 3.15.

Parents and carers of Foundation Stage children wait outside the classroom play area, beyond the blue gate at home time. Children are sent out when teaching staff see the person who is picking up them up. Please notify the class teacher if someone different is picking up your child.

Please do not drive into the school car park at the beginning or end of the day to ensure the safety of the children (except when dropping off for breakfast club).

Currently, all children in the Foundation stage and Key Stage One can receive free school meals. Please fill in the form in your 'starting school' pack so that we know if you want to take up this offer. Children can bring their own packed lunch if they wish.

Regular attendance helps the continuity of your child's education, however, if your child is absent from school, we must be notified either by a telephone call or letter. The school phone number is 01952 882950.

We need to know in writing who will be picking your child up from school. Please complete the form in your starting school pack, which gives us this information. If there is a change to who normally picks up your child, please fill in the 'going home' book in the classroom. Thank you.



This is a checklist of what your child will need when he or she starts school. You can opt for plain red jumpers or cardigans without the school logo if you prefer. Details about how to order the uniform with the school logo will be sent to you.

Uniform

Red sweatshirt

Red cardigan

Red polo shirt

White shirt/blouse

Grey/black trousers

Grey/black pinafore dress/skirt

Summer – red and white checked or striped dress.

Black shoes/boots

P.E. Kit

Black shorts, red t- shirt.

Trainers/pumps

P.E. kit- this is usually kept in a bag in your child's locker all week

Jewellery needs to be removed before P.E.



Forest school

Children will visit the forest school site each week. They will need to bring

- Wellington boots
- Waterproof coats.

We shall inform you when it will take place as soon as the new term starts.

Playtime

We have a morning playtime from 10.35 – 11.00.

The school provides free fruit for Foundation stage and Key Stage one children which is available every day. We have achieved Healthy school status and if your child does not like fruit we would encourage children to bring an alternative healthy snack (no lollipops or nuts please).



Water

Children are encouraged to bring a bottle of water to keep in their classroom throughout the day.

Medication

If a child needs medication during the school day, please inform the class teacher and a consent form will need to be completed.

Parent Teacher Association

There is a thriving PTA and parents automatically become members when their child enters school. There are committee meetings (approximately one every half term) and events throughout the year. We need your support. If you could help in any way, please let us know.

Homework

We encourage children to share their reading books at home on a regular basis. When appropriate, children will be given a small amount of homework, usually to support themes being covered in maths, literacy or topic work in the class.

Reading

The primary way that we teach reading in the Foundation Stage is through phonics. Children will begin working through the 'Letters and Sounds' scheme when they start school. As they learn more letter sounds and how to break words down for reading, they will be given a phonically decodable book to bring home. Children will need to be encouraged to 'sound out' each word and blend it again for reading. Here are some suggestions to get the best out of reading with your child.

1. Children need help, encouragement and practise every day to become good readers. Please try to set aside a quiet 10 minutes every day to support your child with their reading.
2. Pictures are essential to your child's reading and your child needs to be able to see the pictures at all times. Talk about what is happening in the pictures.
3. If your child is getting stuck on a word the main strategy we use is phonics- asking children to break down the word by looking at individual sounds. You can help them to work it out.

4. If your child is too tired or is finding concentrating on their reading hard, just try again another time. Reading should be an enjoyable and positive experience.
5. Reading a variety of stories to your child is important.

In school, the teaching of reading skills takes place in small groups in daily guided reading sessions. Children are heard read individually by the class teacher, teaching assistant and sometimes by parent helpers.



The Foundation stage curriculum.

The Foundation stage curriculum is made up of seven areas (see below). These are divided into two sections.

Prime areas

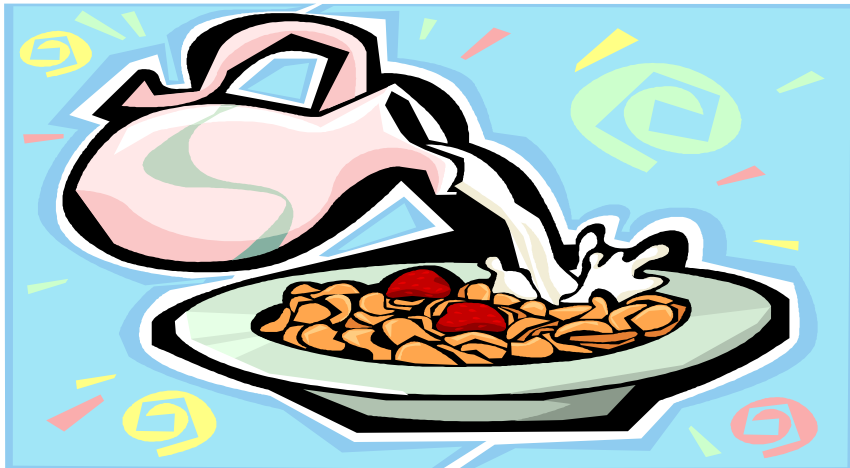
- Communication and language development.
- Physical development.
- Personal, social and emotional development

Specific areas of learning

- Literacy development
- Mathematics development
- Understanding the world
- Expressive arts and design

Breakfast club.

Breakfast club is run in the school hall each morning. Childcare is provided from 8.00 am to 8.45 am. A healthy breakfast is provided by the kitchen. There are opportunities for varied supervised play. Children are taken to their classrooms at 8.45 for the start of the school day. If you are interested in this provision, please contact the school office.



After school care

If you require after school care for your child then you should contact the school office. Our after school care runs from the end of the school day until 6.00pm Monday to Thursday and until 5.30 on Fridays.

Your class teacher will be Mrs Fleming. The class teaching assistant is Becky.

Mrs Fleming



Becky

