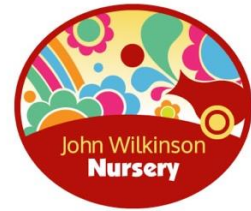




# John Wilkinson Primary School and Nursery



**Starting school**  
March 2022

## The practicalities.

School doors open at 8.45. The register is taken at 9.00am. We encourage children to be in school at 8.45 so that they can take part in early morning activities.

School finishes for the Foundation stage at 3.15.

Parents and carers of Foundation Stage children wait outside the classroom play area, beyond the blue gate at home time. Children are sent out when teaching staff see the person who is picking up them up. Please notify the class teacher if someone different is picking up your child.

**Please do not drive into the school car park at the beginning or end of the day to ensure the safety of the children (except when dropping off for breakfast club).**

Currently, all children in the Foundation stage and Key Stage One can receive free school meals. Please fill in the form in your 'starting school' pack so that we know if you want to take up this offer. Children can bring their own packed lunch if they wish.

Regular attendance helps the continuity of your child's education, however, if your child is absent from school, we must be notified either by a telephone call or letter. The school phone number is 01952 882950.

**We need to know in writing who will be picking your child up from school. Please complete the form in your starting school pack, which gives us this information. If there is a change to who normally picks up your child, please fill in the 'going home' book in the classroom. Thank you.**



This is a checklist of what your child will need when he or she starts school. You can opt for plain red jumpers or cardigans without the school logo if you prefer. You can order uniform with our school logo by following [this link](#)

## **Uniform**

Red sweatshirt  
Red cardigan  
Red / white polo shirt

White shirt/blouse

Dark grey/black trousers

Grey/black pinafore dress/skirt

Summer – red and white checked or striped dress.

Black shoes/boots

## **P.E. Kit**

Plain Black shorts, black joggers, black hoodie  
Plain red t- shirt  
No branded logo designs please.

Trainers/pumps

Jewellery needs to be removed before P.E.

Children come to school in their PE kits on the days that they have PE.  
You will be notified of the days when your child starts school.



## **Forest school**

Children will visit the forest school site each week. They will need to bring

- Wellington boots
- Waterproof coats.

We shall inform you when it will take place as soon as the new term starts.

## **Playtime**

We have a morning playtime from 10.35 – 11.00.

The school provides free fruit for Foundation stage and Key Stage one children which is available every day. We have achieved Healthy school status and if your child does not like fruit we would encourage children to bring an alternative healthy snack (no lollipops or nuts please).



## **Water**

Children are encouraged to bring a bottle of water to keep in their classroom throughout the day.

## **Medication**

If a child needs medication during the school day, please inform the class teacher and a consent form will need to be completed.

## **Parent Teacher Association**

There is a thriving PTA and parents automatically become members when their child enters school. There are committee meetings (approximately one every half term) and events throughout the year. We need your support. If you could help in any way, please let us know.

## **Homework**

We encourage children to share books at home on a regular basis. When appropriate, children will be given a small amount of homework, usually to support themes being covered in maths, literacy or topic work in the class.

## **Reading**

The way that we teach reading in the Foundation Stage is primarily through phonics. Children will begin working through the 'Little Wandle revised Letters and Sounds' scheme when they start school. Children will be able to take a library book home with them each week to enjoy with parents, carers or siblings.



## **The Foundation stage curriculum.**

The Foundation stage curriculum is made up of seven areas (see below). These are divided into two sections.

### **Prime areas**

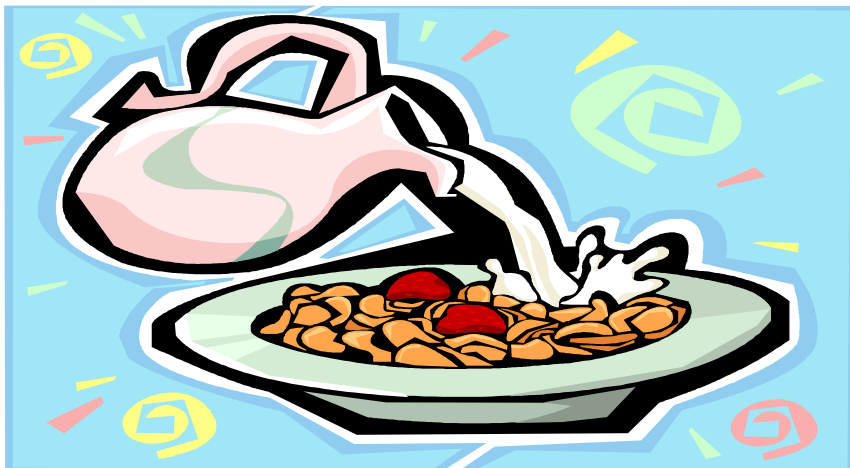
- Communication and language development.
- Physical development.
- Personal, social and emotional development

### **Specific areas of learning**

- Literacy development
- Mathematics development
- Understanding the world
- Expressive arts and design

## **Breakfast club.**

Breakfast club is run in the school hall each morning. Childcare is provided from 8.00 am to 8.45 am. A healthy breakfast is provided by the kitchen. There are opportunities for varied supervised play. Children are taken to their classrooms at 8.45 for the start of the school day. If you are interested in this provision, please contact the school office.



## **After school care**

If you require after school care for your child then you should contact the school office. Our after school care runs from the end of the school day until 6.00pm Monday to Thursday and until 5.30 on Fridays.

If you need any further information, please contact the school on 01952  
882950

Or, visit our website by clicking on [this link](#).

Your class teacher will be Mrs Fleming. The class teaching assistant is  
Becky.

Mrs Fleming



Becky

