

Rewarding Learning Powers

All of the staff at John Wilkinson Primary understand how to recognise and reward children when they demonstrate any of the learning superpowers. In each class, you will see a display using the same consistent language of learning, and a reward system to celebrate children growing their superpowers!

Depending on the age and Key Stage of your child, their learning skills and superpowers will be rewarded in a range of ways. They will all receive special superhero stickers (POW!, BAM! Etc); they may get to wear a special Ready Eddie or Able Mabel superhero cape; they may bring home badges or certificates to show you their achievements.

How parents can help

We would like you to reinforce the language and message of the learning superpowers by using it at home when your children are involved in everyday activities.

We want them to understand that they are learning all the time, not just in their lessons, in school.

- Ask them "What would Ready Eddie/Able Mabel do?" "How would Ready Eddie/Able Mabel concentrate on this task?"
- Relate the superpowers to stories they read and the way that the characters behave—maybe the character would have fared better in the story if they had used their learning power!
- Use yourself as a role model—tell children when you find something tricky, and how you kept on going.
- Encourage them to block out distractions when doing their homework (turn the TV off/sit in a quiet room)
- Give them a responsibility for a household chore. Encourage them to plan the steps they would need to take to complete it successfully.
- When your children come home with a sticker/badge/certificate to celebrate that they built their learning power, praise them!

John Wilkinson Primary School



Building Learning Power

with Ready Eddie and Able Mabel

Developing children's attitudes and
readiness for learning through building
their learning superpowers

Information leaflet for parents

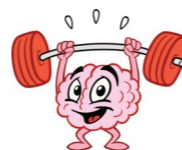


What is Building Learning Power?

Professor Guy Claxton undertook lengthy research into how children learn, and helped to redefine children's 'achievement' to include children's **growth as learners** - rather than focusing solely on academic ability.

At John Wilkinson Primary School, we believe that children who develop a core bank of learning "superpowers" are better equipped to demonstrate success in their learning. Children who can use and apply these skills in their learning in school are much more likely to grow into life-long learners as they move on to secondary school and beyond into adulthood.

The Building Learning Power programme revolves around children understanding what they can and must do in order to be good learners. It presents the brain as a learning muscle that can be made stronger with practise. The skills we want to develop in our children are based on the four characteristics from Guy Claxton's research; resilience, resourcefulness, reciprocity and reflectiveness.



How are we developing children's learning power?

We have developed our own language of learning that will clearly communicate to our children the expectations on their learning behaviours and attitudes in school.

We have grouped the learning behaviours into three key superpowers. Children gain each superpower by being able to demonstrate different skills in their learning in a range of different contexts. We have created our very own learning superheroes, Ready Eddie and Able Mabel, who embody the learning power philosophy.

Super powers	Lock into your Learning	Choose What You Use	Map Your Learning Journey
Skills to develop each power	<ul style="list-style-type: none"> ⇒ Concentrate ⇒ Keep on going 	<ul style="list-style-type: none"> ⇒ Use your toolkit ⇒ Weave your web 	<ul style="list-style-type: none"> ⇒ Know your next steps ⇒ See the big picture
Focuses on...	<ul style="list-style-type: none"> Not giving up easily, even when it gets tricky. Practising blocking out any distractions. Focusing on the task in hand 	<ul style="list-style-type: none"> Making the most of the resources that are available to support learning. Using skills learned in one lesson to succeed in others. Being able to decide when it's best to work on your own and with your team. 	<ul style="list-style-type: none"> Knowing what you need to improve. Visualising their learning as a whole, and understanding how the component parts work together.
Results in a learner who...	Is resilient	Is resourceful Shows reciprocity	Is reflective